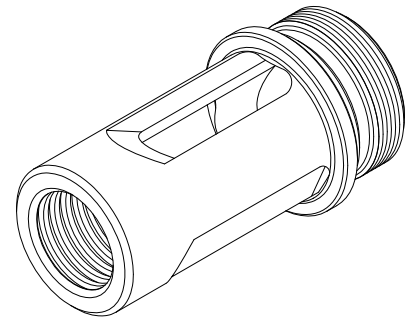
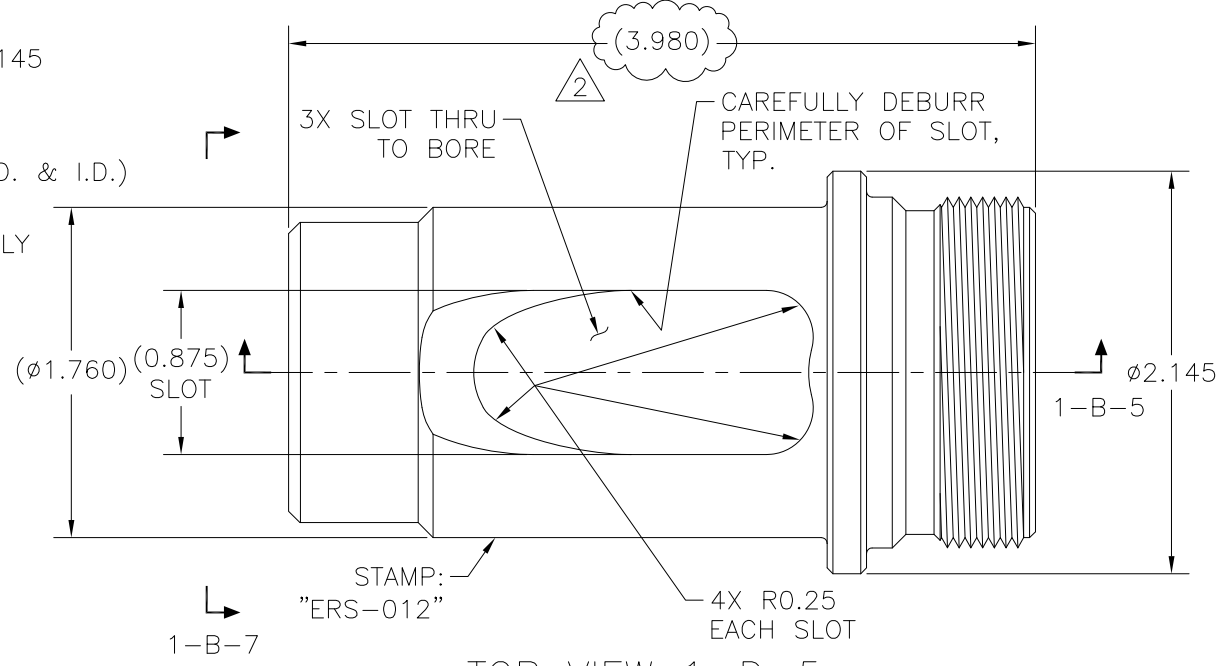


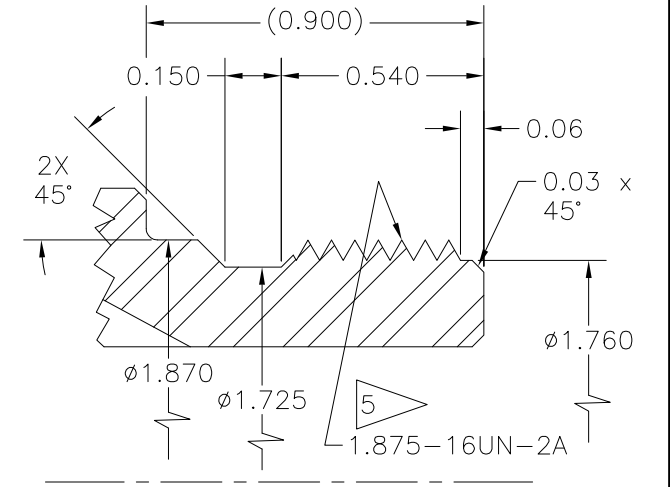
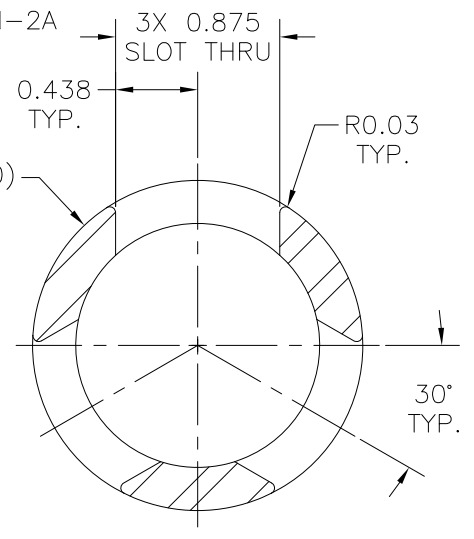
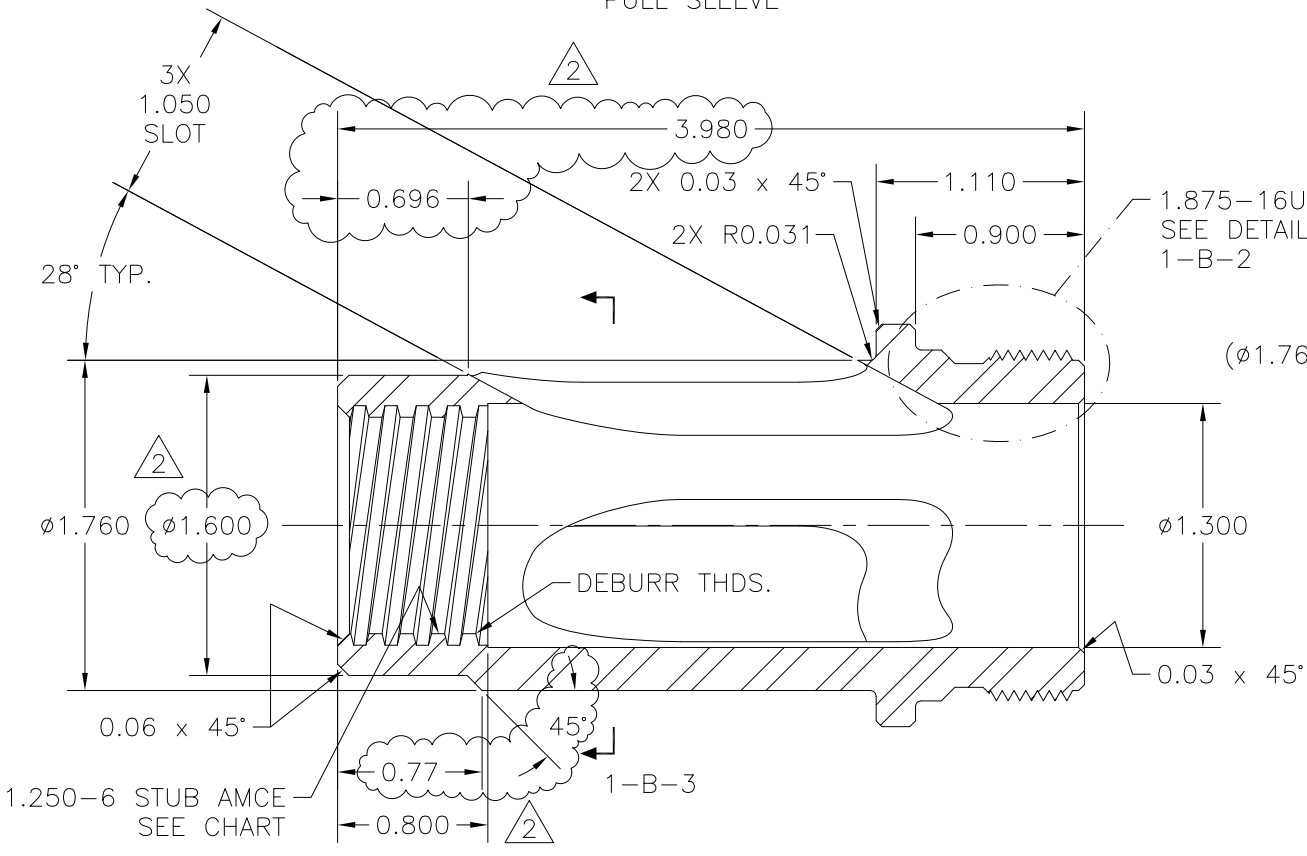
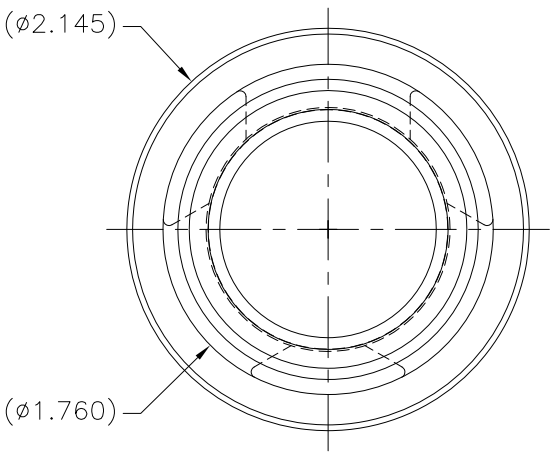
NOTES:

1. MATERIAL: BAR, 17-4PH/15-5PH, $\phi 2.145$ x 4.180 LG.
2. HEAT TREAT: COMMERCIAL HT.
3. SURFACE TREATMENT: XYLAN COAT (O.D. & I.D.) OR EQ.
4. THREAD TRUNCATION TAPERED SMOOTHLY AT BOTH ENDS.
5. 1.875-16UN-2A 60° V-THREAD EXTERNAL CLASS 2A MAJOR DIA. = 1.873/1.864
6. WEIGHT: 0.92 LBS.

REVISIONS				
NO	DESCRIPTION	DATE	BY	APR/DATE
0	ISSUED FOR MANUFACTURE	05/12/10		
1	ADDED RADIUS TO CORNERS OF SLOTS	08/13/10		
2	REDUCED OVERALL LENGTH BY 0.20 INCHES; CHANGED DIAMETER ON UPPER END TO $\phi 1.600$ x 0.77 LG.	4/7/11	MM	



1.250-6 STUB ACME THREAD INTERNAL	
MAJOR DIAMETER, MIN.	- 1.270
MAJOR DIAMETER, MAX.	- 1.280
PITCH DIAMETER, MIN.	- 1.200
PITCH DIAMETER, MAX.	- 1.210
MINOR DIAMETER, MIN.	- 1.150
MINOR DIAMETER, MAX.	- 1.158
BASIC THREAD HEIGHT	- 0.050
BASIC WIDTH OF CREST	- 0.070
THREAD PITCH	- 0.167



TOLERANCES: UNLESS OTHERWISE SPECIFIED 0.X ± 0.030 0.XX ± 0.010 0.XXX ± 0.005 ANGLES ± 1/2° BREAK EDGES 0.015 x 45° MIN. FINISH 125 [Symbol] 0.010A ALL DIMS ARE IN INCHES, UNLESS NOTED OTHERWISE.	PROPRIETARY NOTICE THIS DRAWING AND THE INFORMATION IT CONTAINS ARE CONSIDERED CONFIDENTIAL, AND MAY NOT BE REPRODUCED, COPIED OR USED, IN PART OR IN WHOLE, WITHOUT PRIOR WRITTEN CONSENT.	Integrated Ocean Drilling Program TEXAS A&M UNIVERSITY 1000 DISCOVERY DRIVE COLLEGE STATION, TX 77845	
		SHEET 1 OF 1 SCALE 1:2 BY KM DATE 04/01/10	TITLE PULL SLEEVE SYSTEM ASSEMBLY 3" ERS CHECKED JCS SIZE D P/N ERS-012 REV. 2